

Longtom-4 H LWD RM 200MD

FIELD PRINT

Format: EcoScope RM Log Vertical Scale: 1:200 Graphics File Created: 06-Aug-2008 17:07

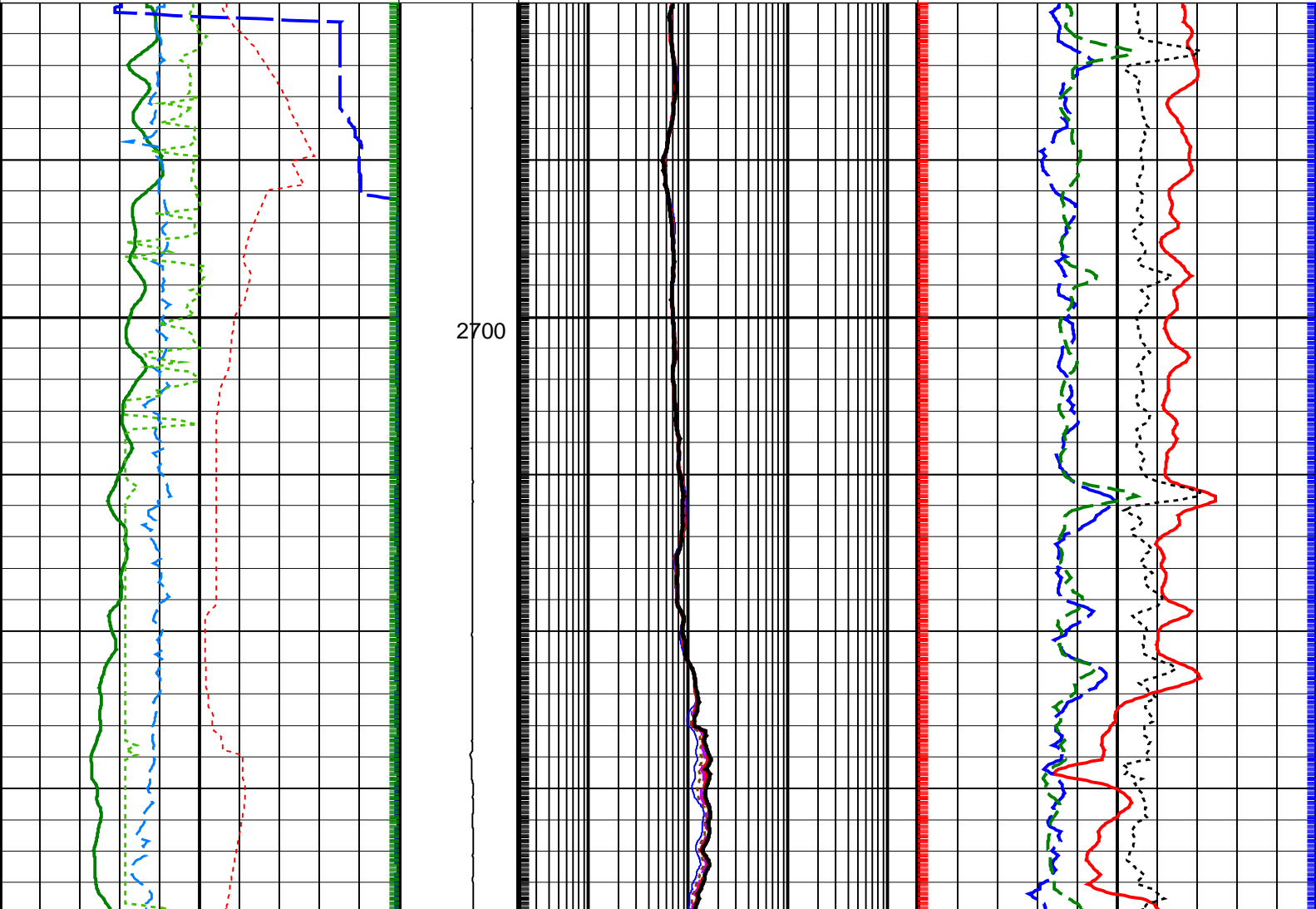
PIP SUMMARY

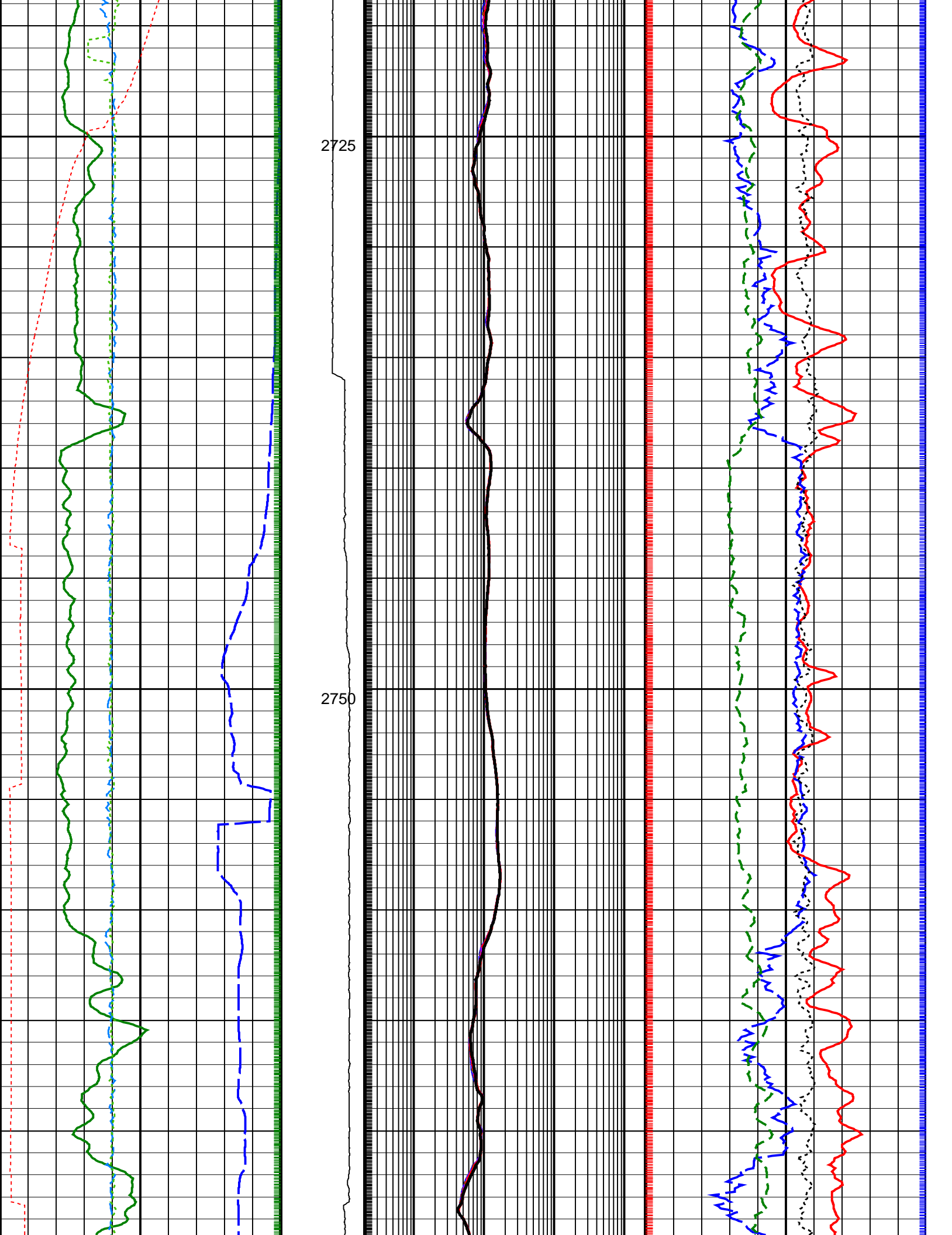
Density Samples ┃ Neutron Samples ┃

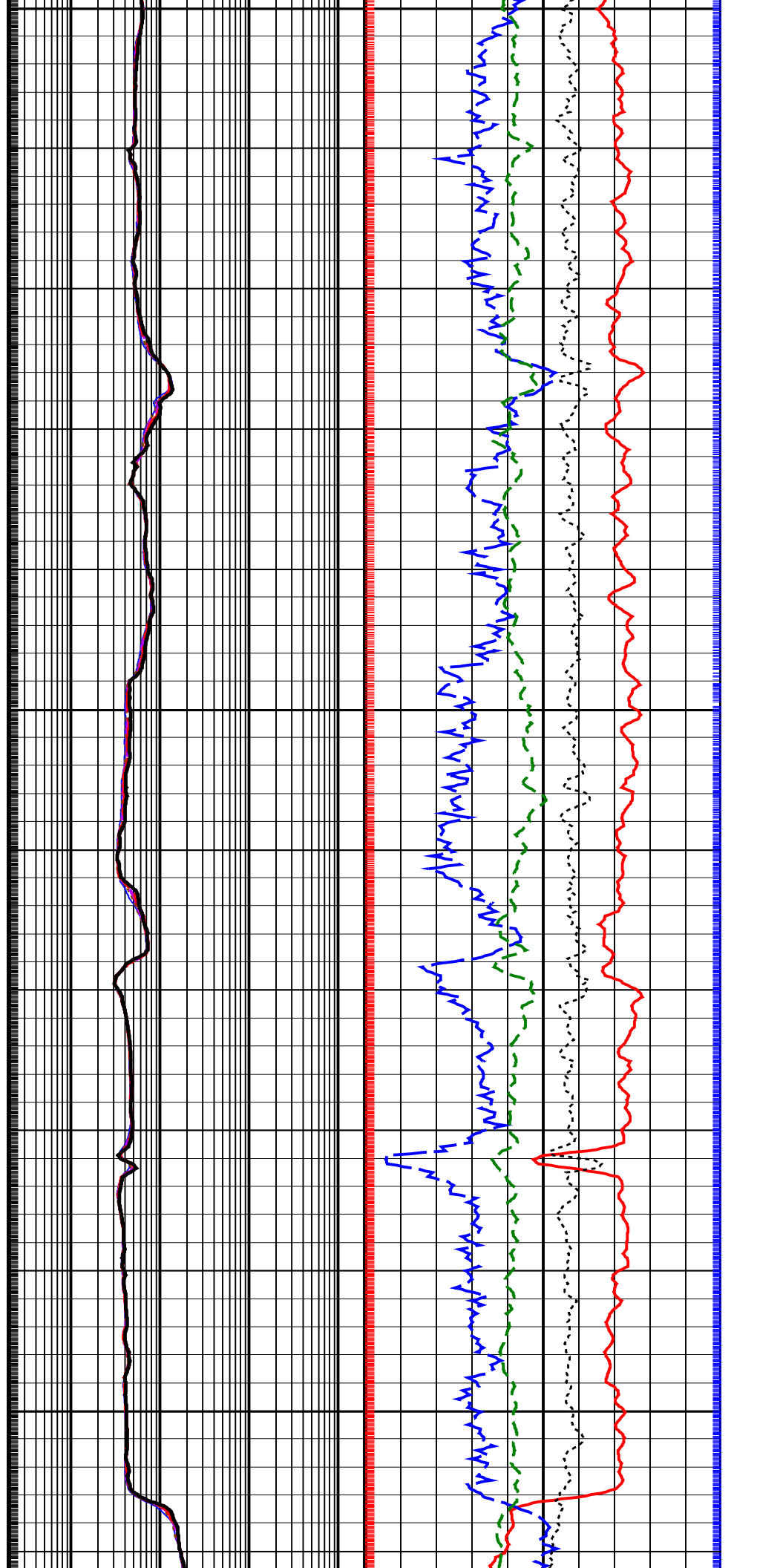
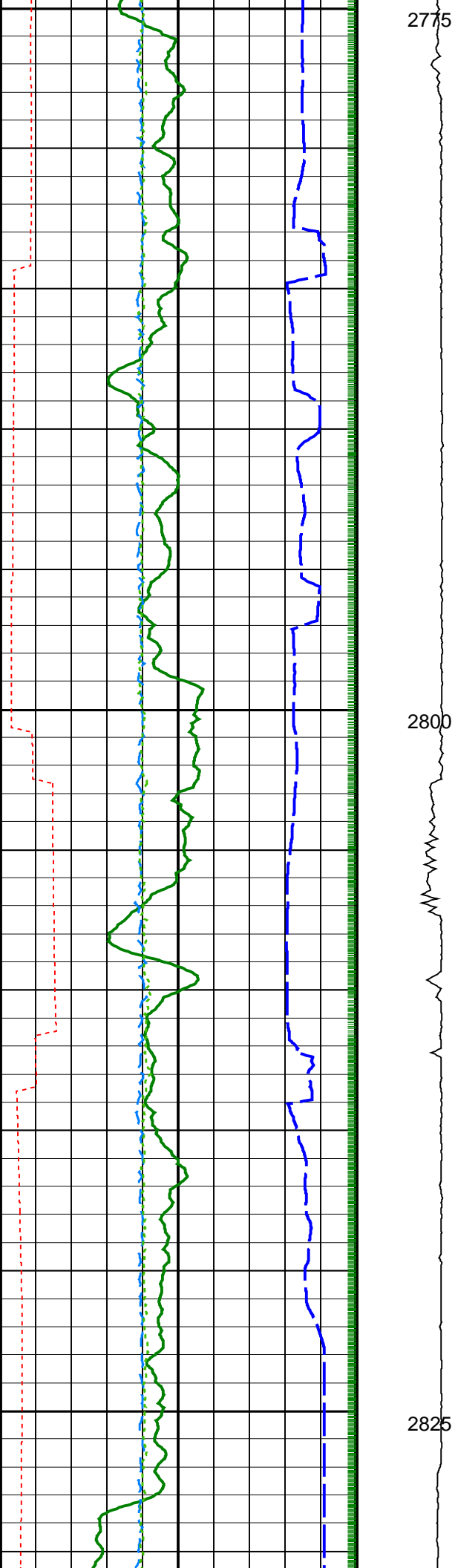
┃ Gamma Ray Samples ┃ Resistivity Samples

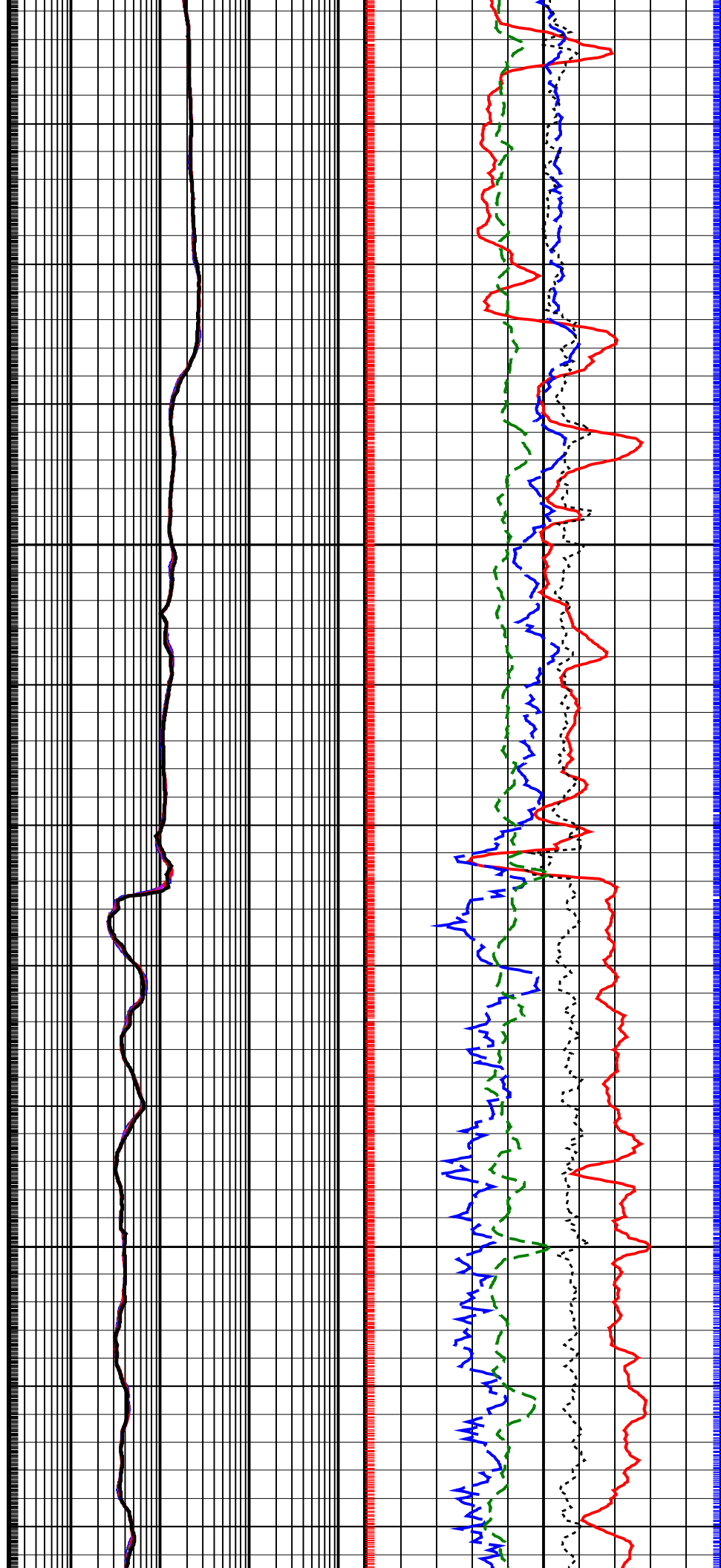
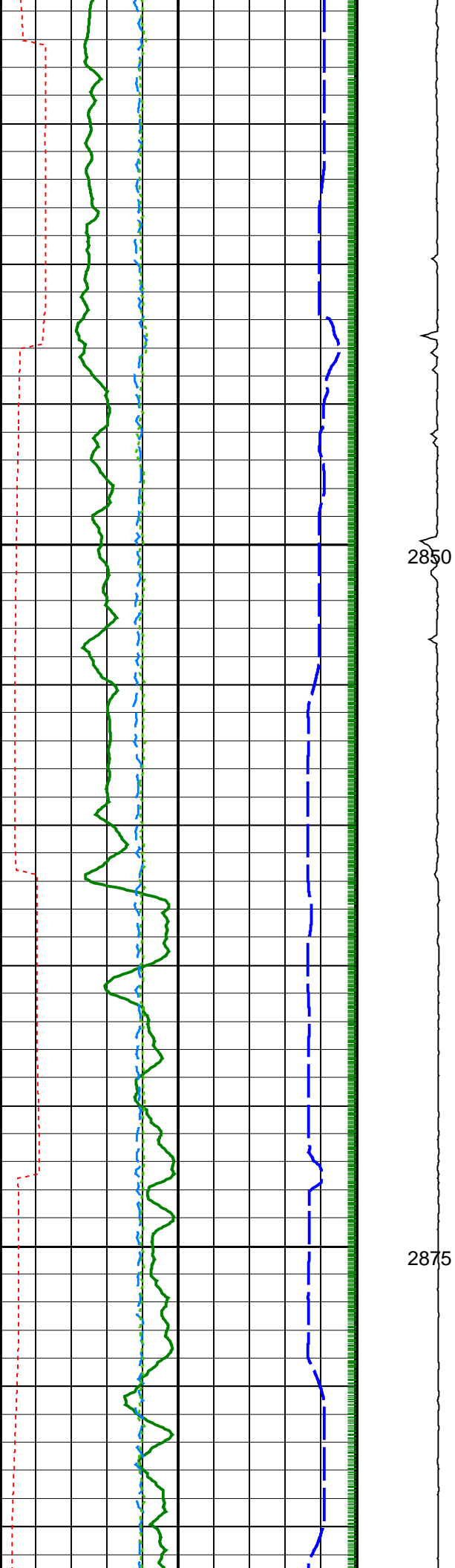
Rate of Penetration, Averaged over Last 5ft (ROP5_RM) (M/HR)		ARC Phase Shift Resistivity 40 inch at 2 MHz (P40H) (OHMM)	
200 0		0.2 2000	
Ultrasonic Caliper, Vertical Diameter (UCVE) (IN)		ARC Phase Shift Resistivity 34 inch at 2 MHz (P34H) (OHMM)	Photoelectric Factor, Bottom (PEB) (-----)
6 16		0.2 2000	0 10
Ultrasonic Caliper, Horizontal Diameter (UCHO) (IN)		ARC Phase Shift Resistivity 28 inch at 2 MHz (P28H) (OHMM)	Bulk Density Correction, Bottom (DRHB) (G/C3)
6 16		0.2 2000	-0.25 0.25
Time after BIT (between drilling and measurement) (TAB_DEN) (HR)		ARC Phase Shift Resistivity 22 inch at 2 MHz (P22H) (OHMM)	Thermal Neutron Porosity (Ratio Method) in Selected Lithology (TNPH) (PU)
0 10		0.2 2000	45 -15
Gamma Ray, Average (GRMA) (GAPI)	Collar Rotational Speed (CRPM) (RPM)	ARC Phase Shift Resistivity 16 inch at 2 MHz (P16H) (OHMM)	Bulk Density, Bottom (ROBB) (G/C3)
0 200	0 200	0.2 2000	1.85 2.85

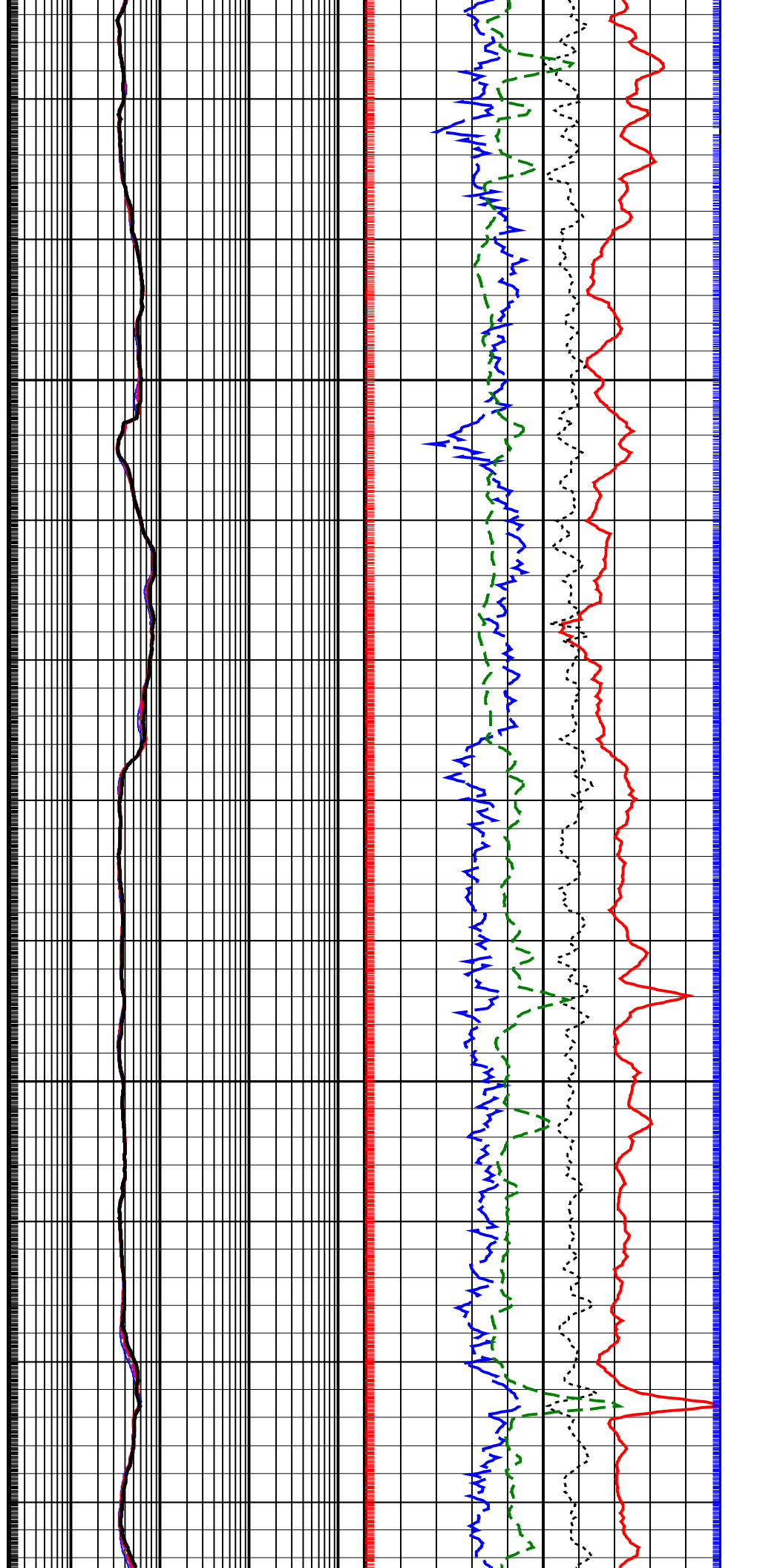
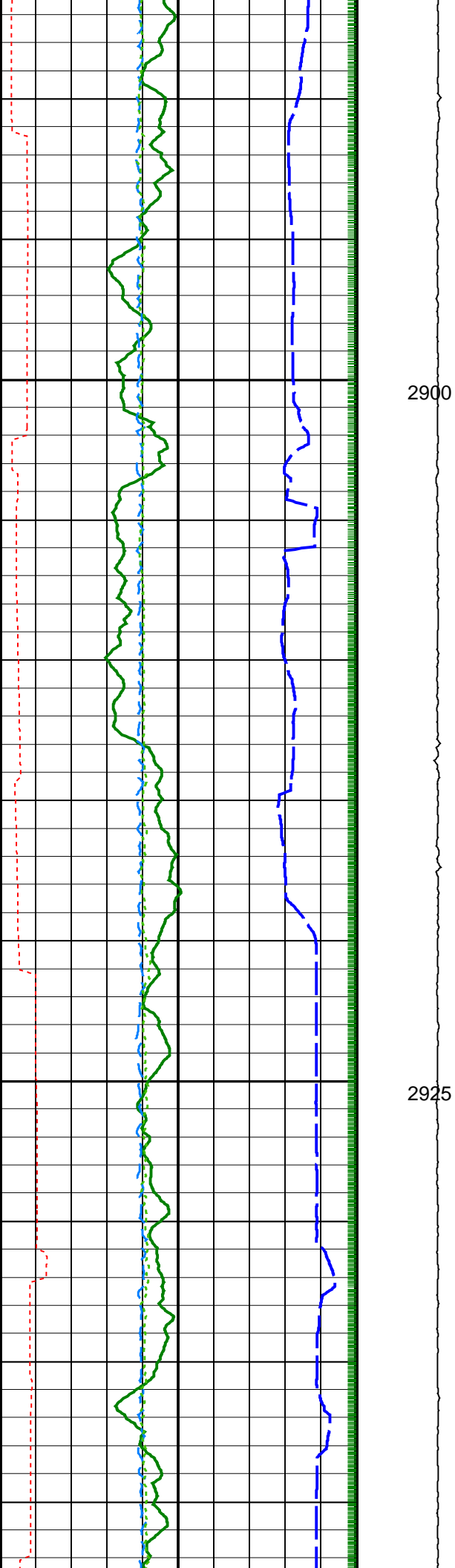
2700

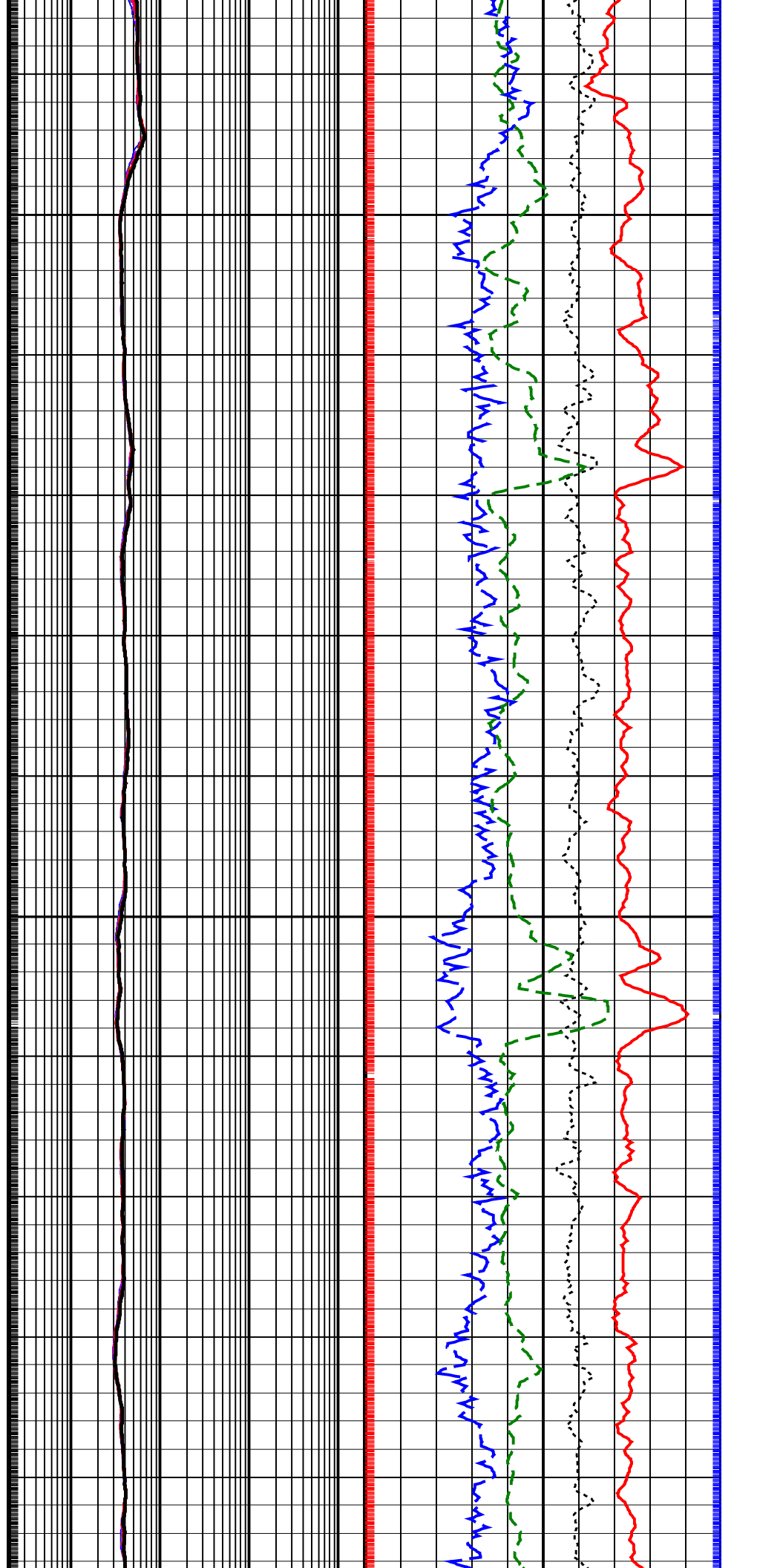
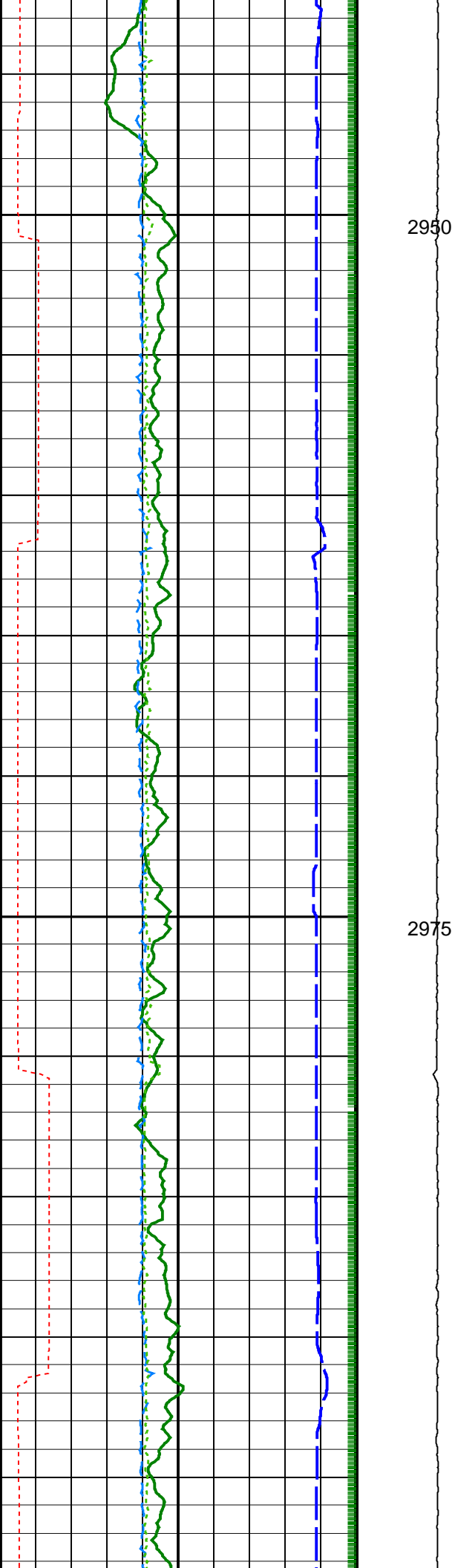


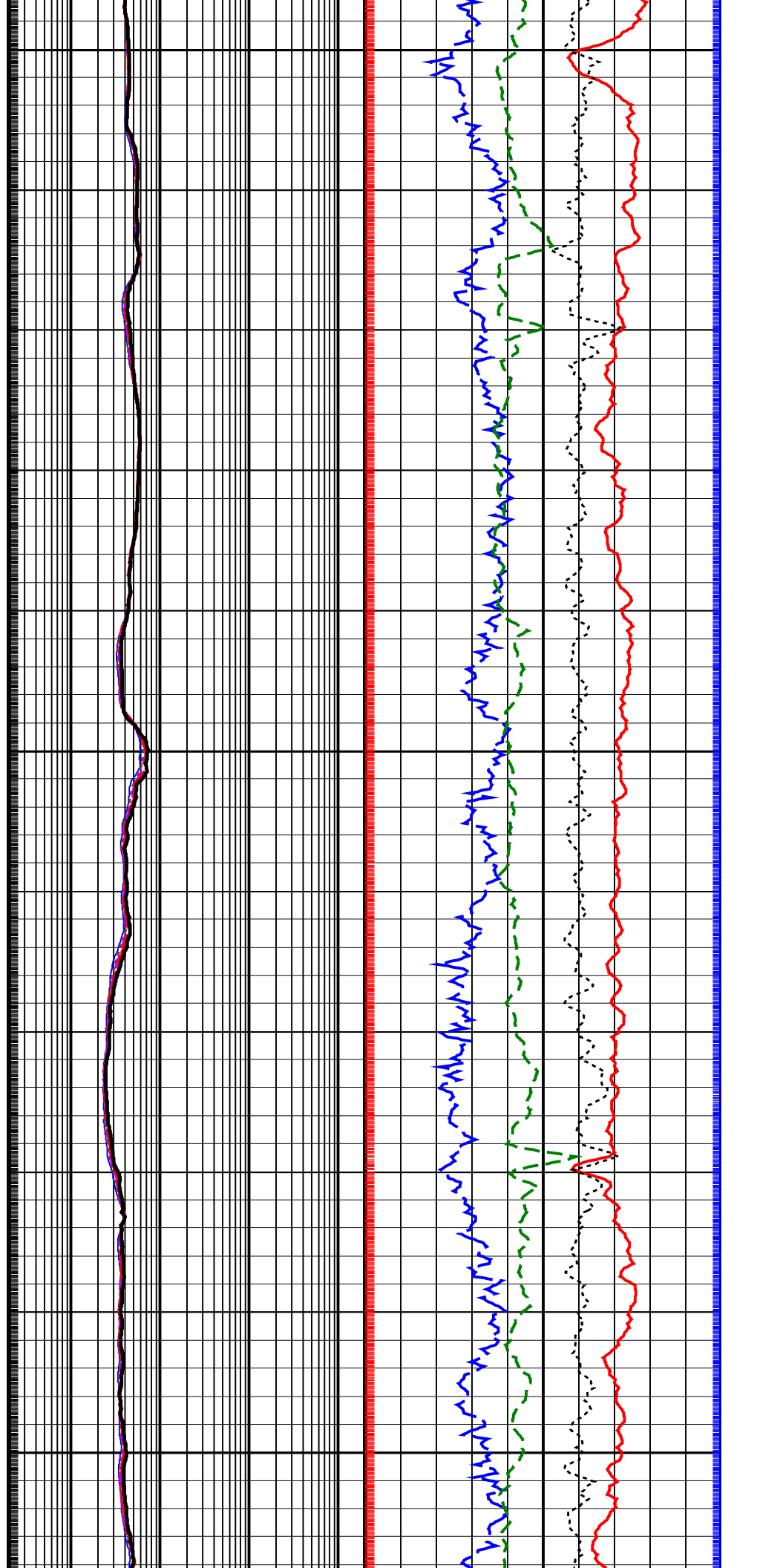
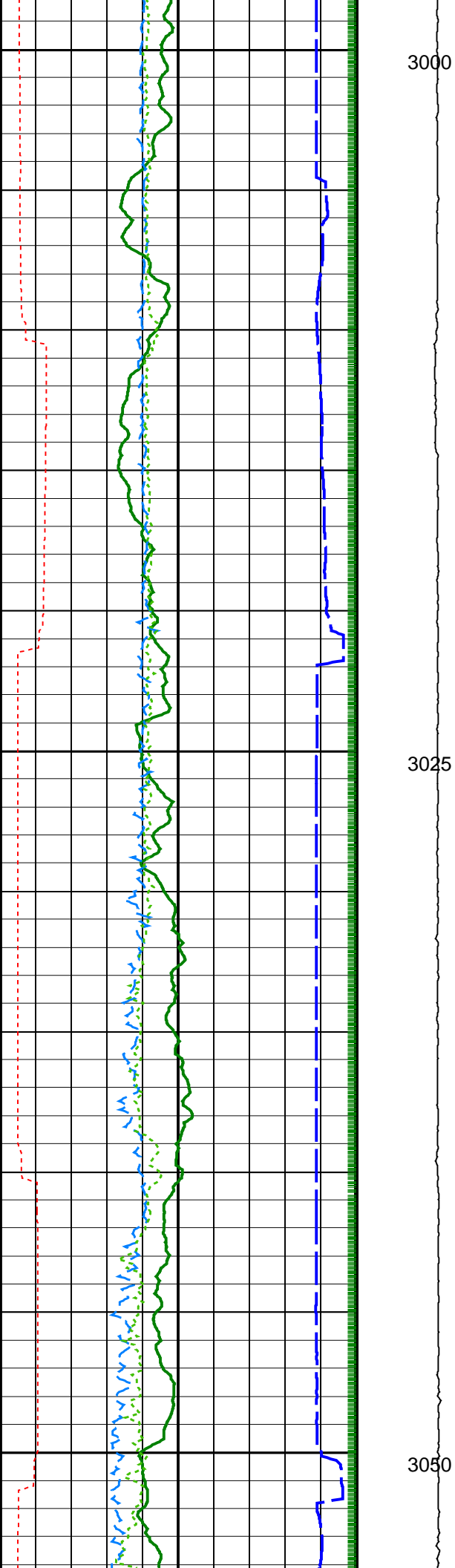


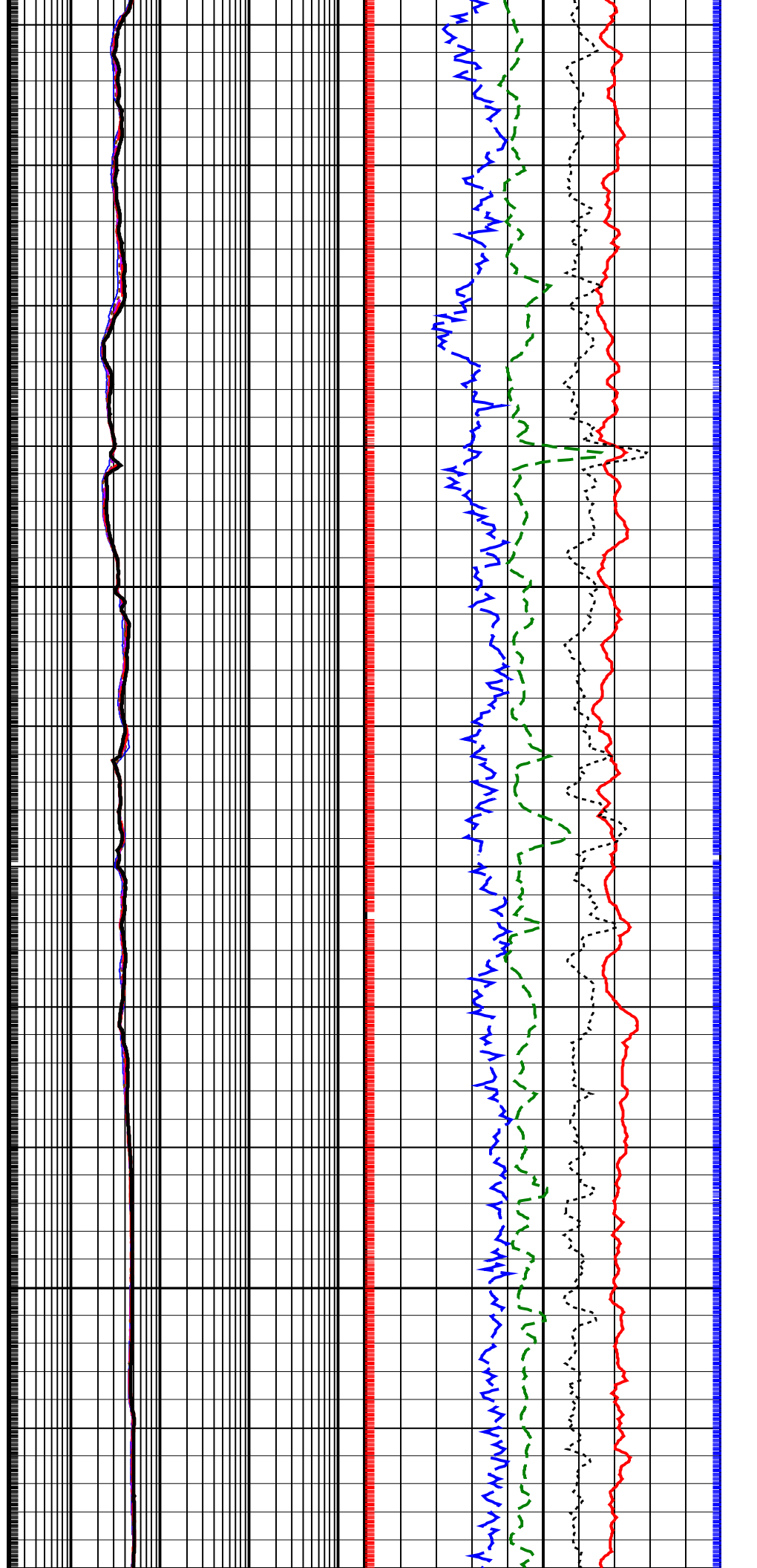
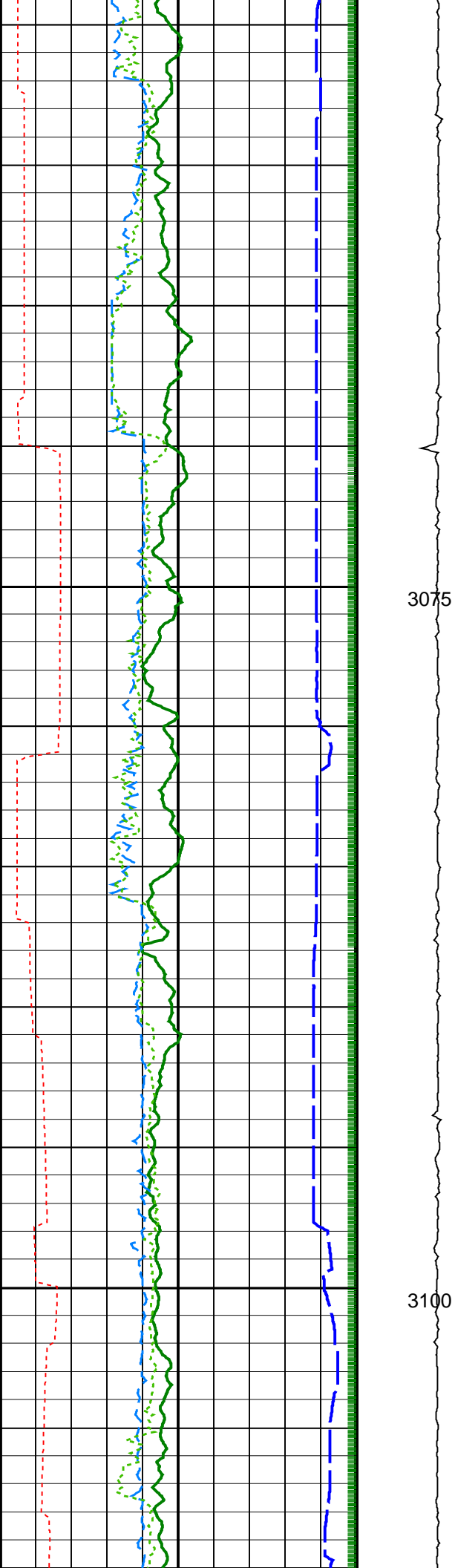


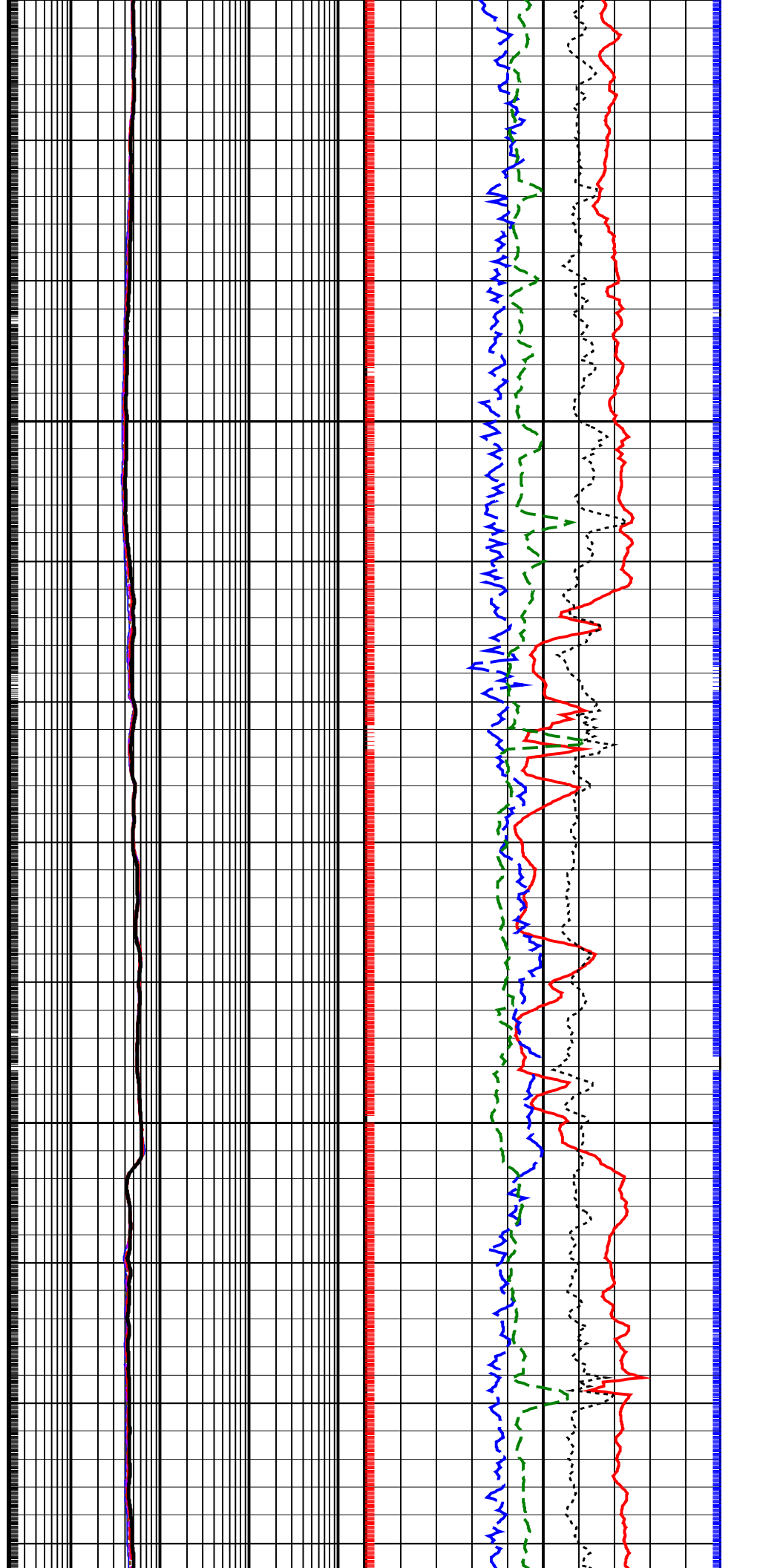
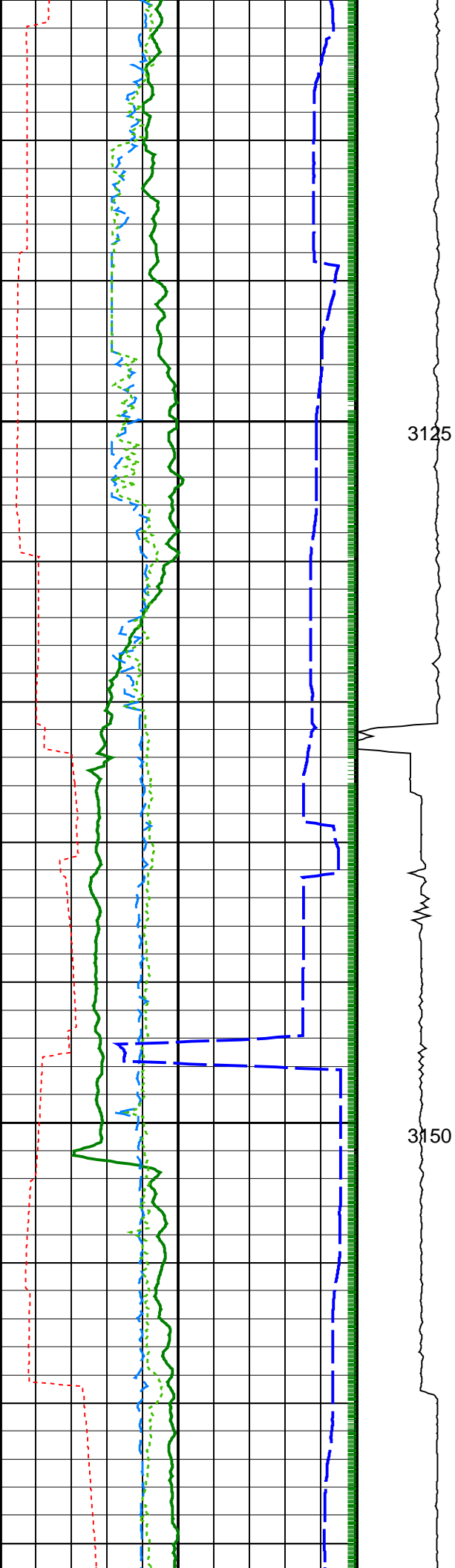


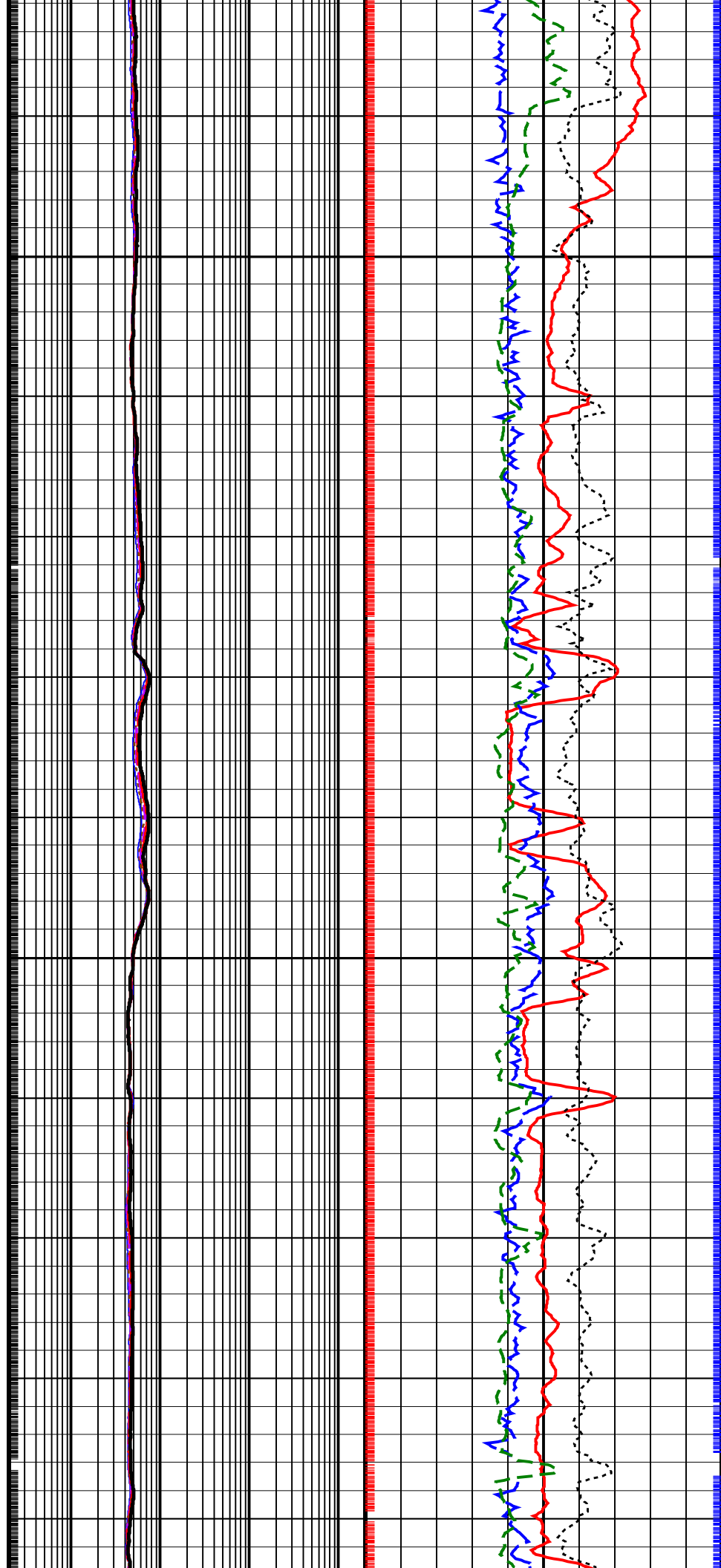
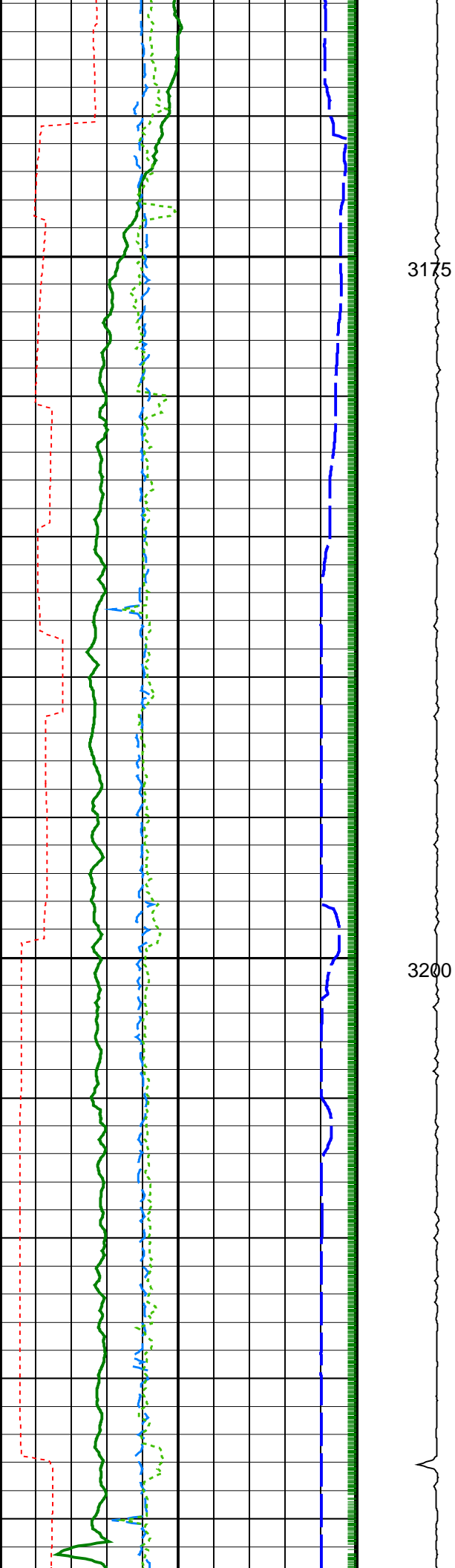


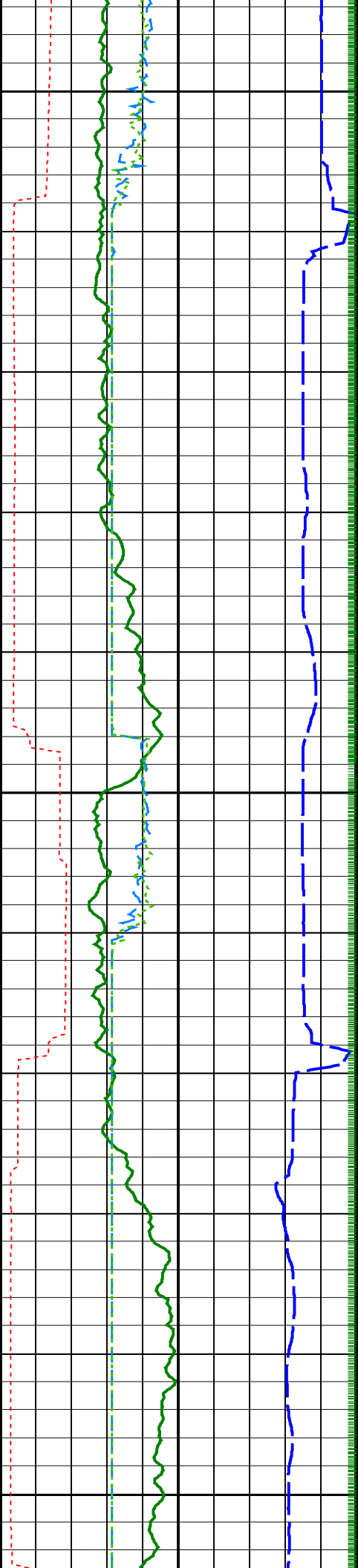








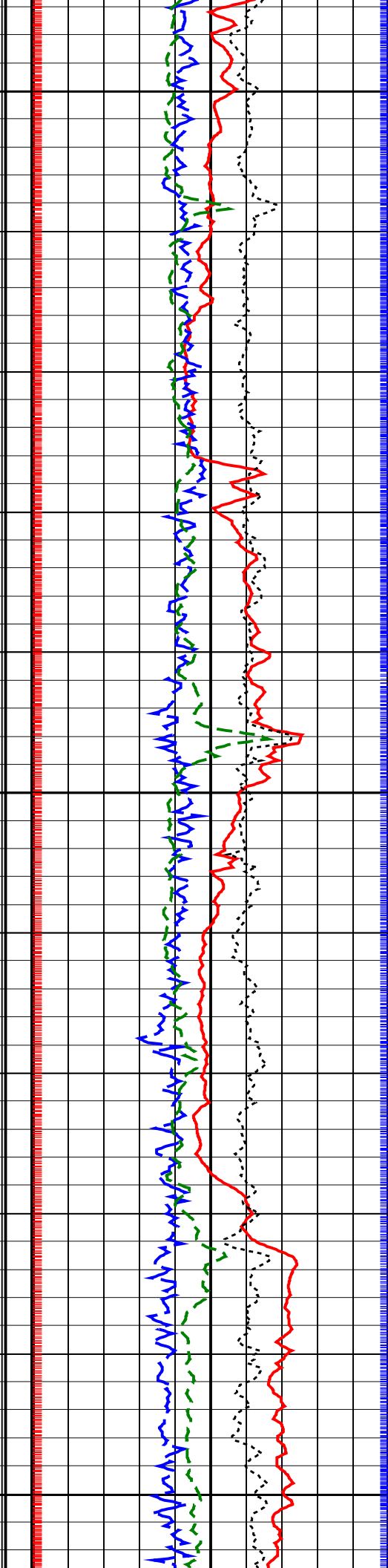
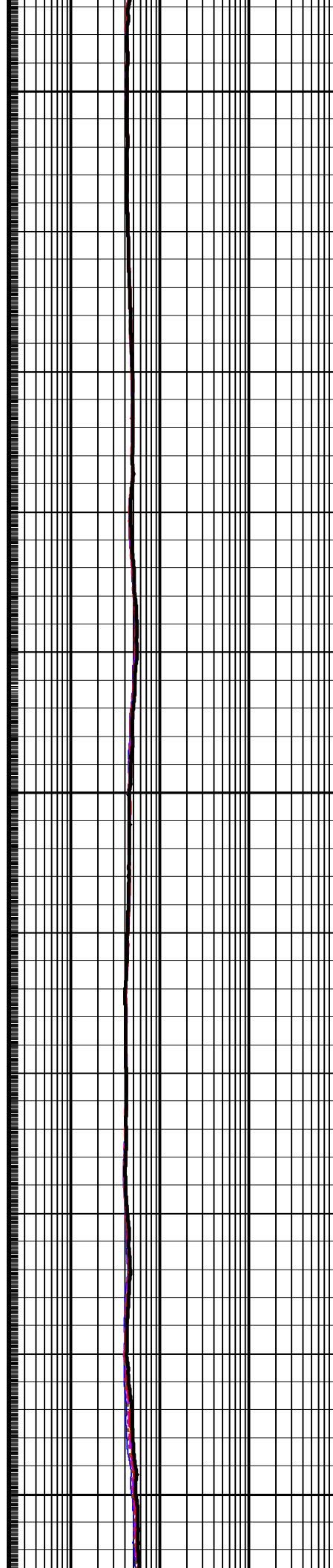


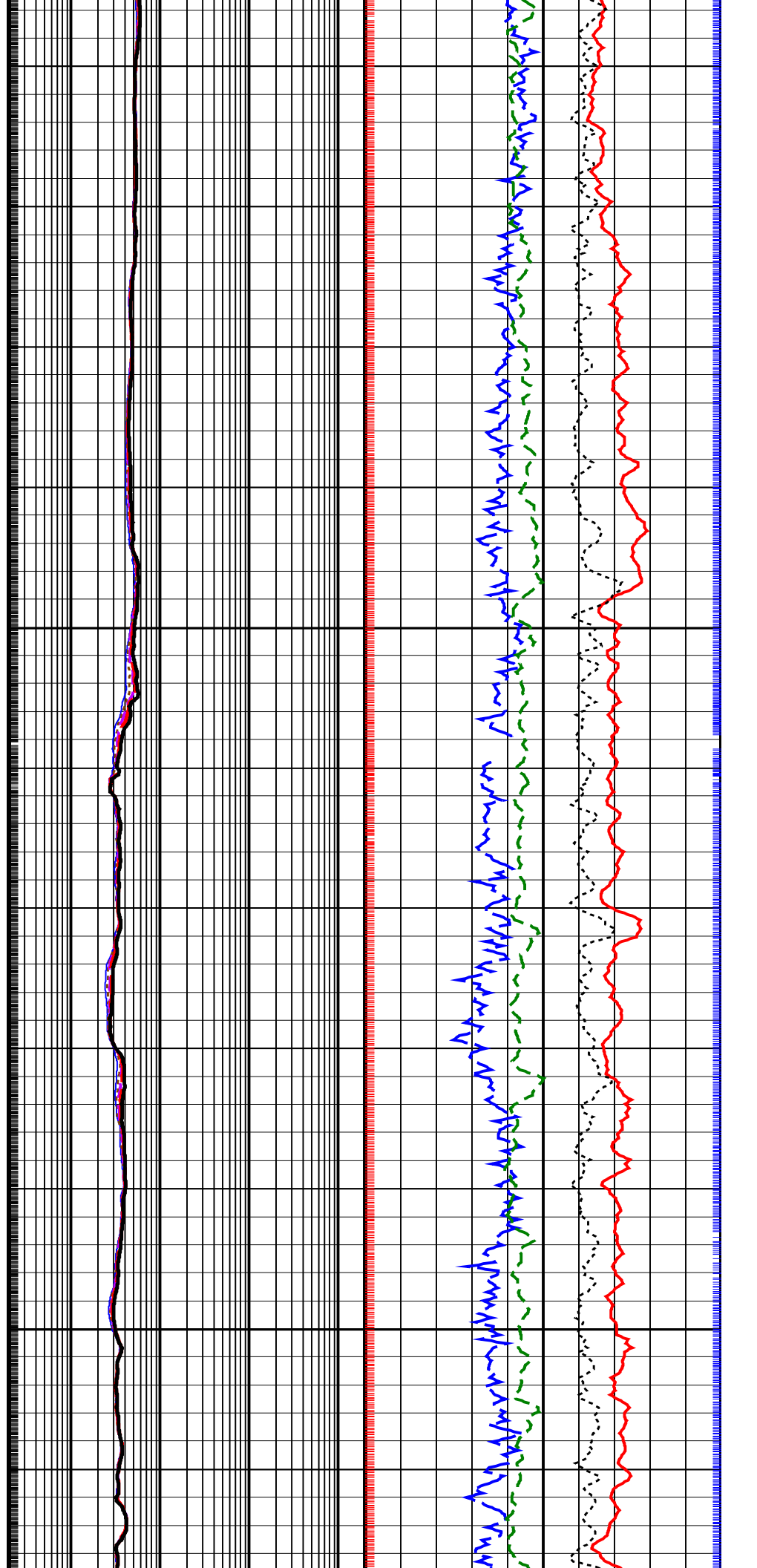
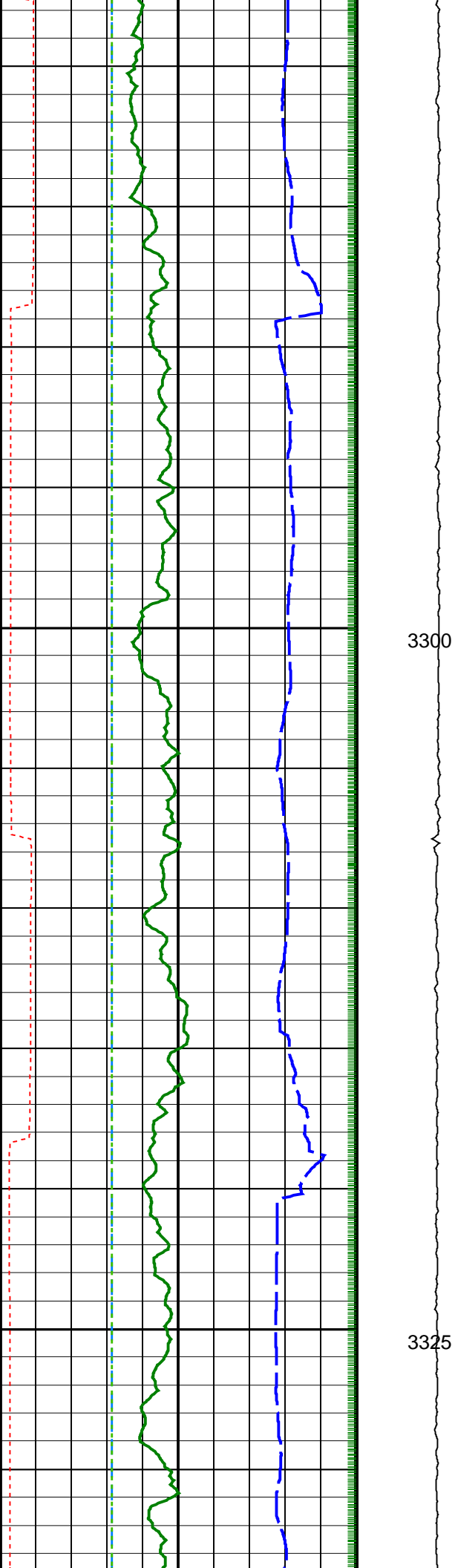


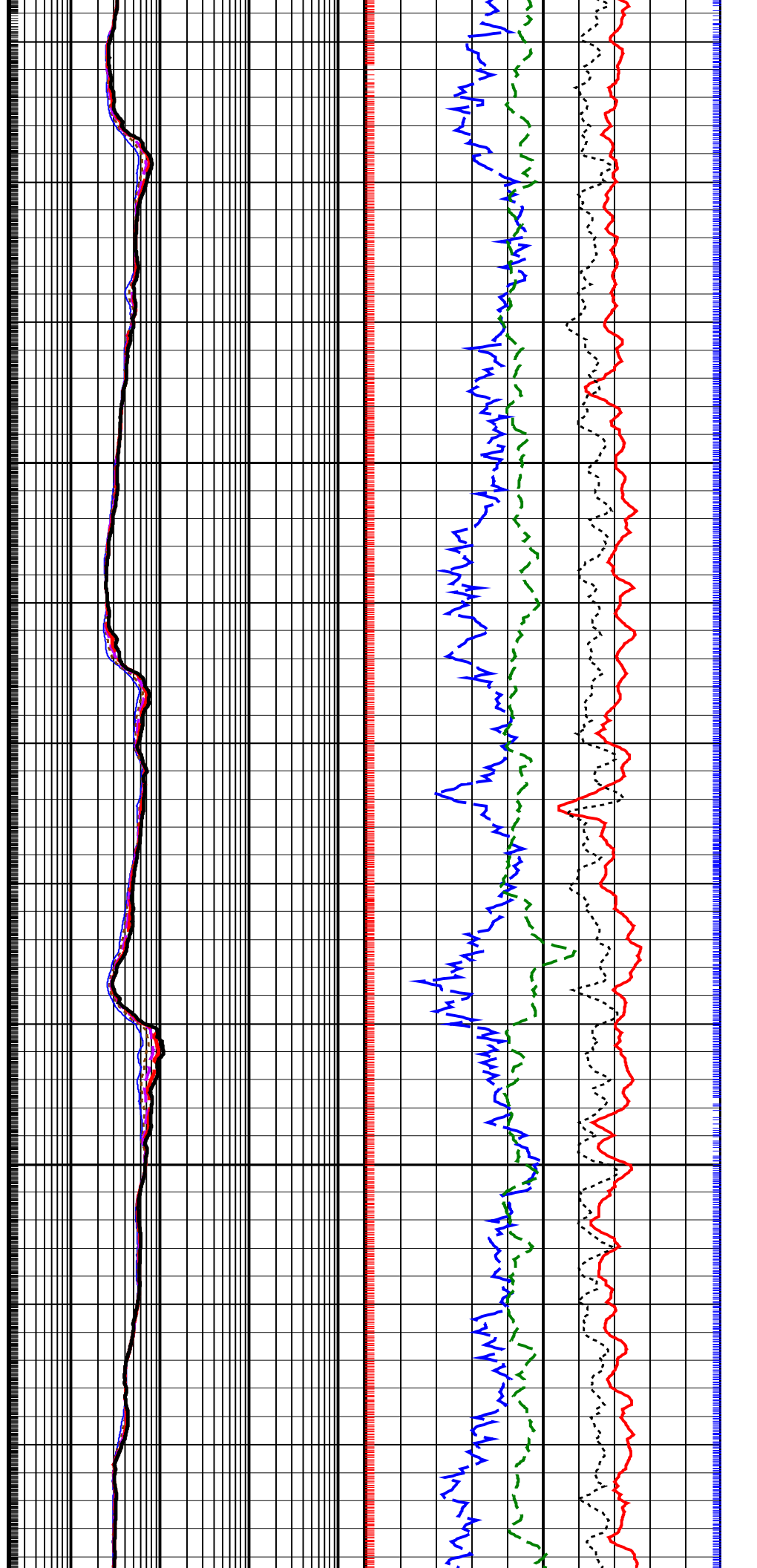
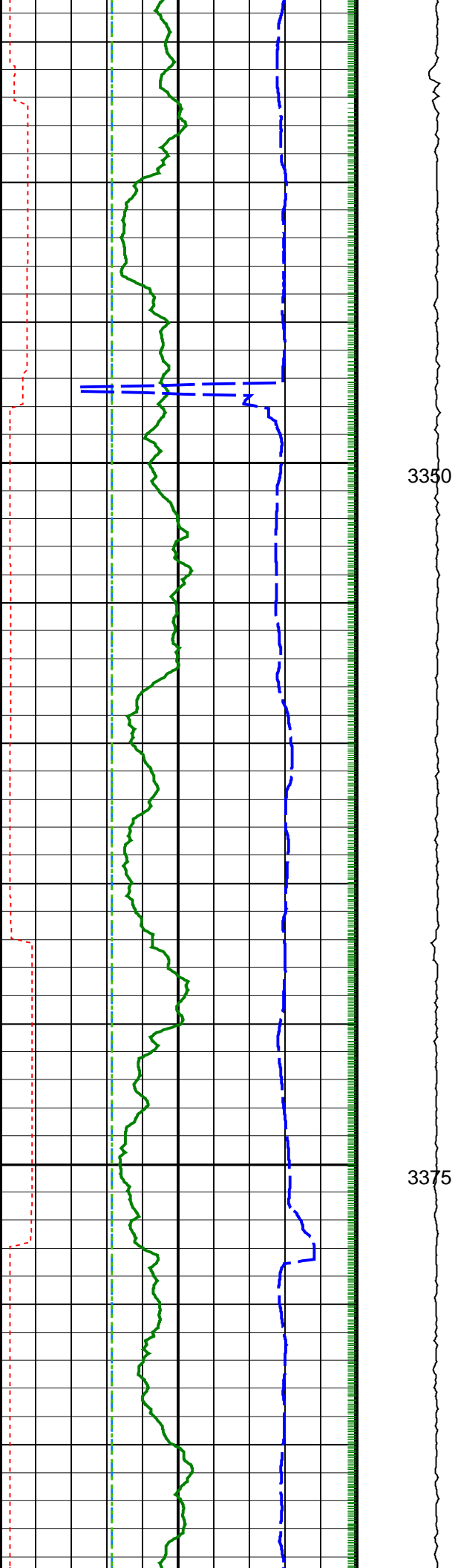
3225

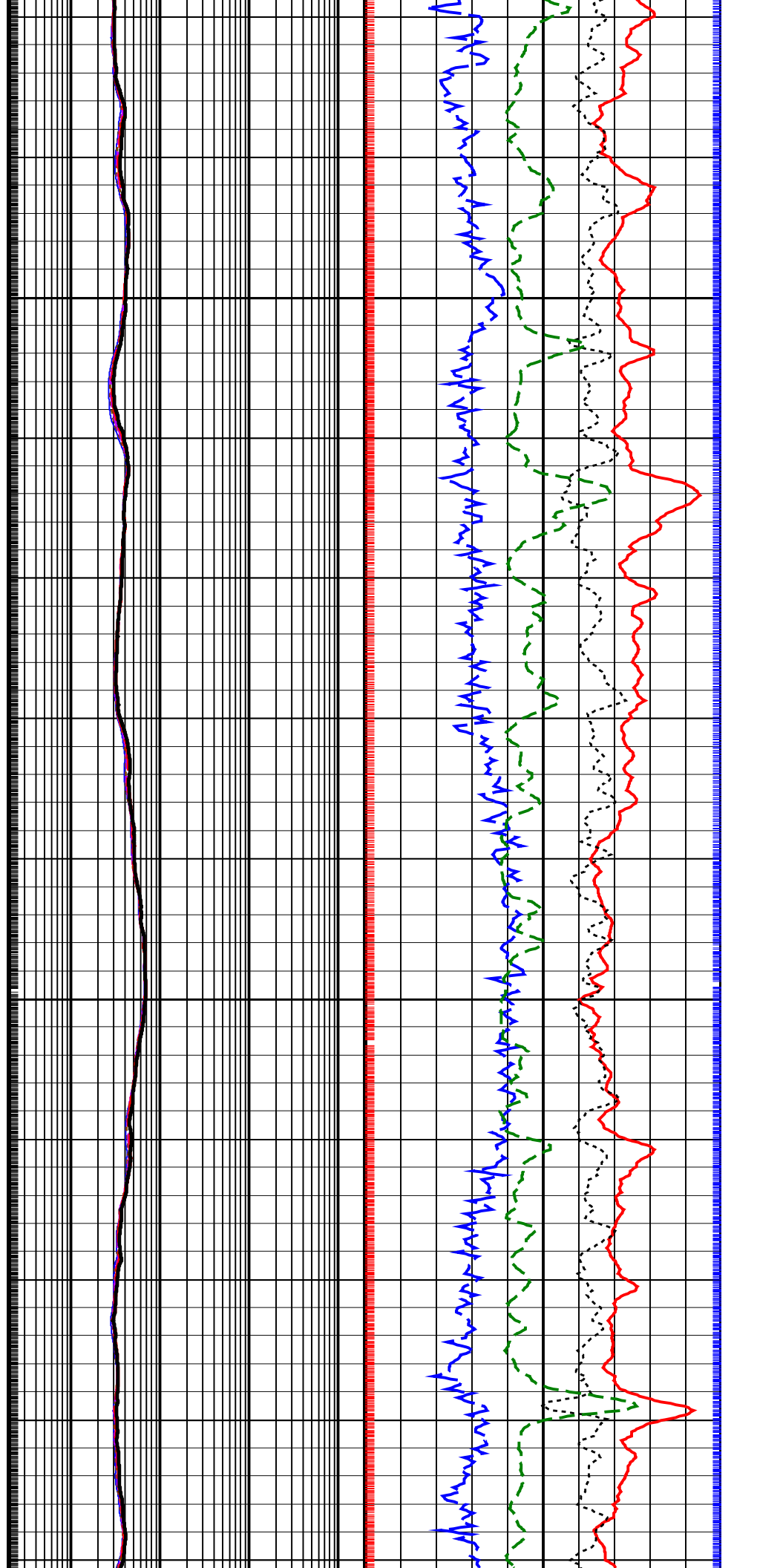
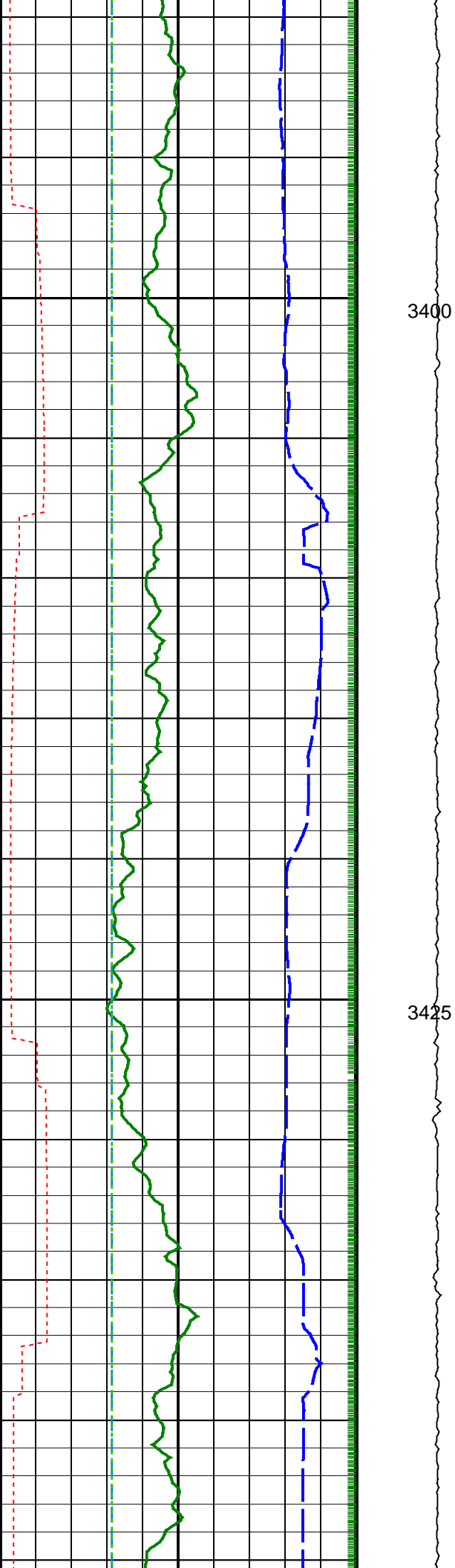
3250

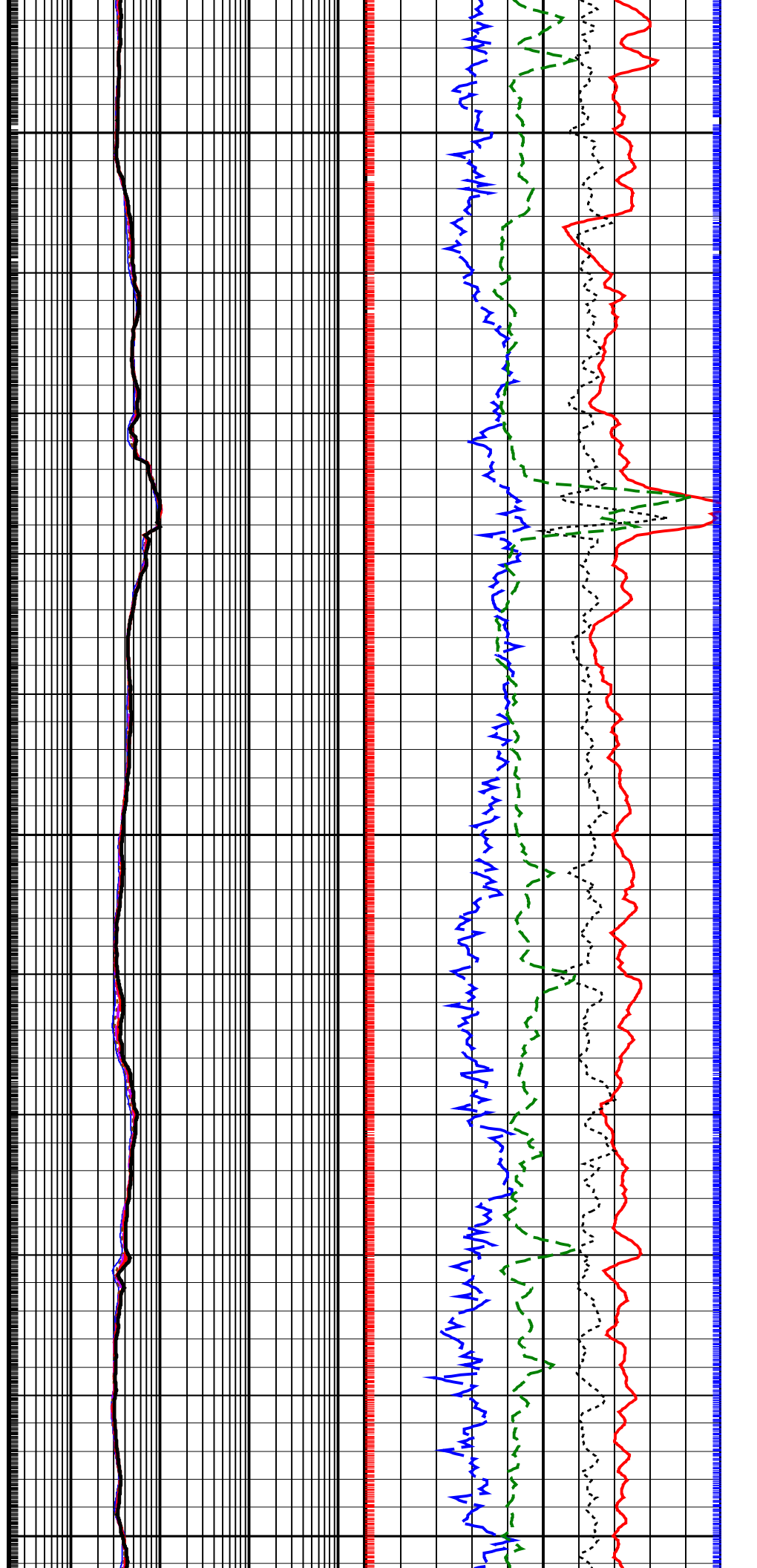
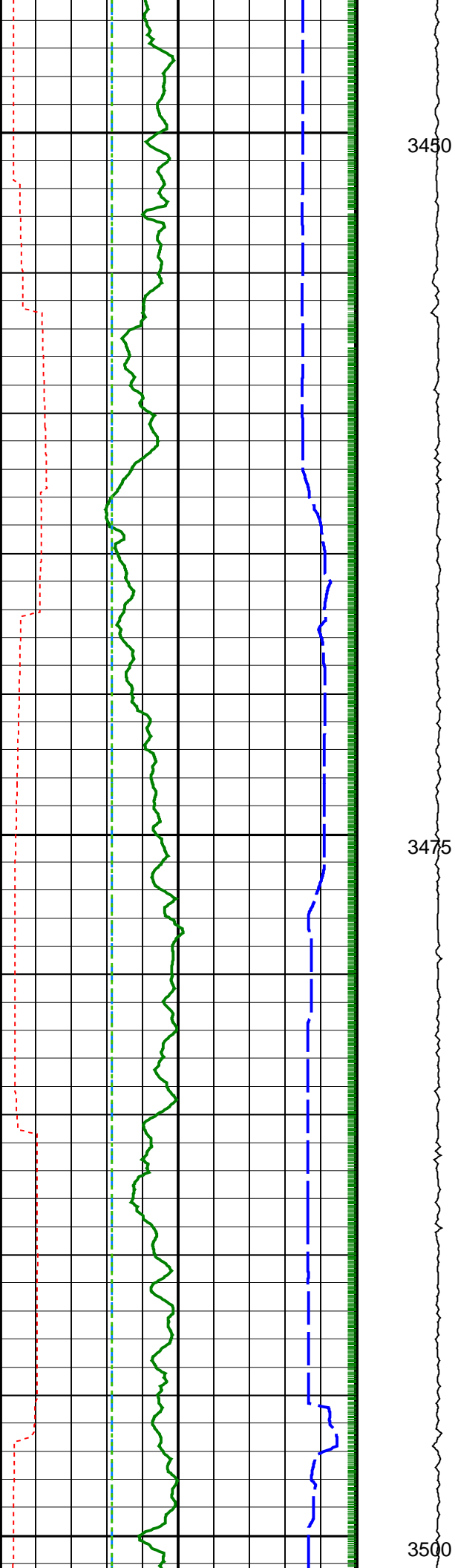
3275

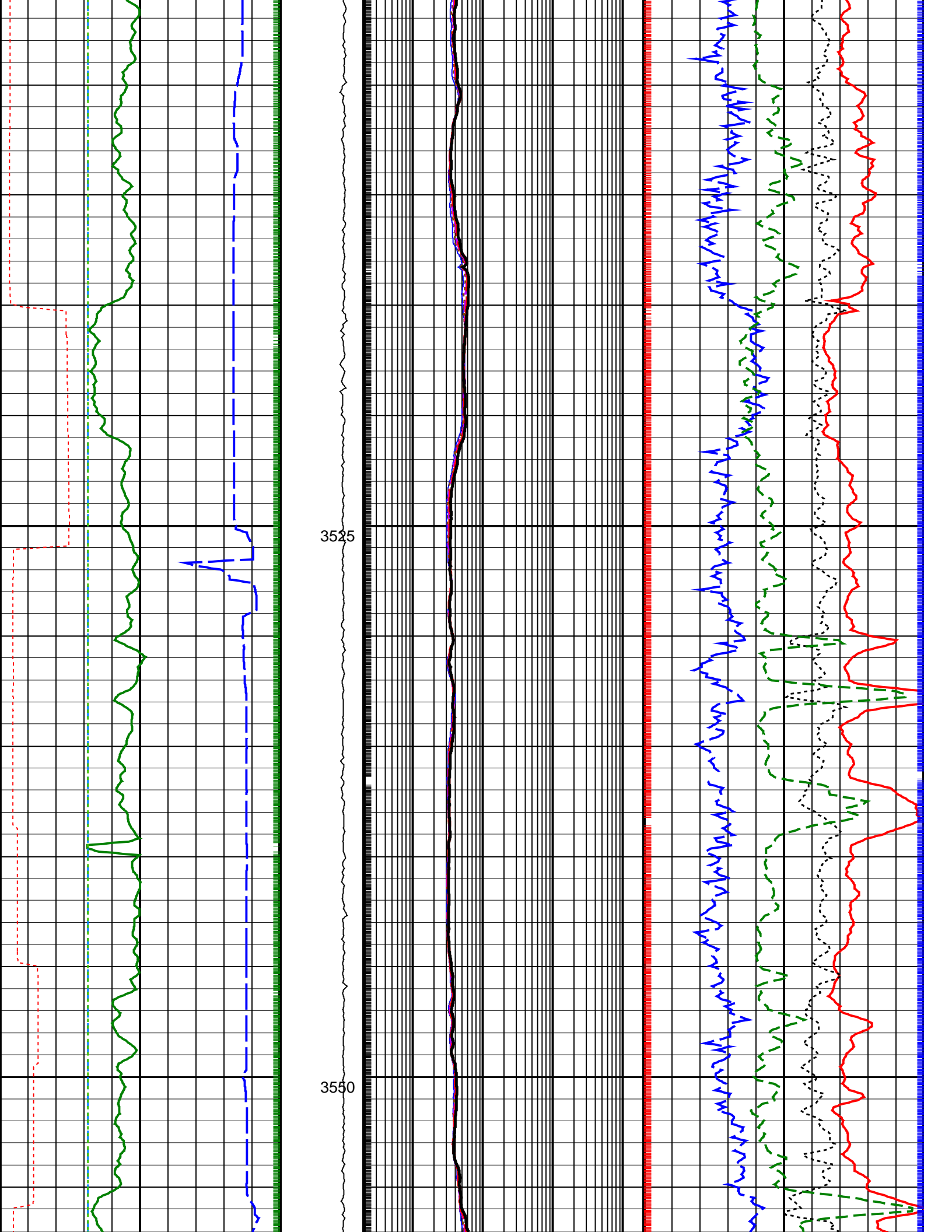


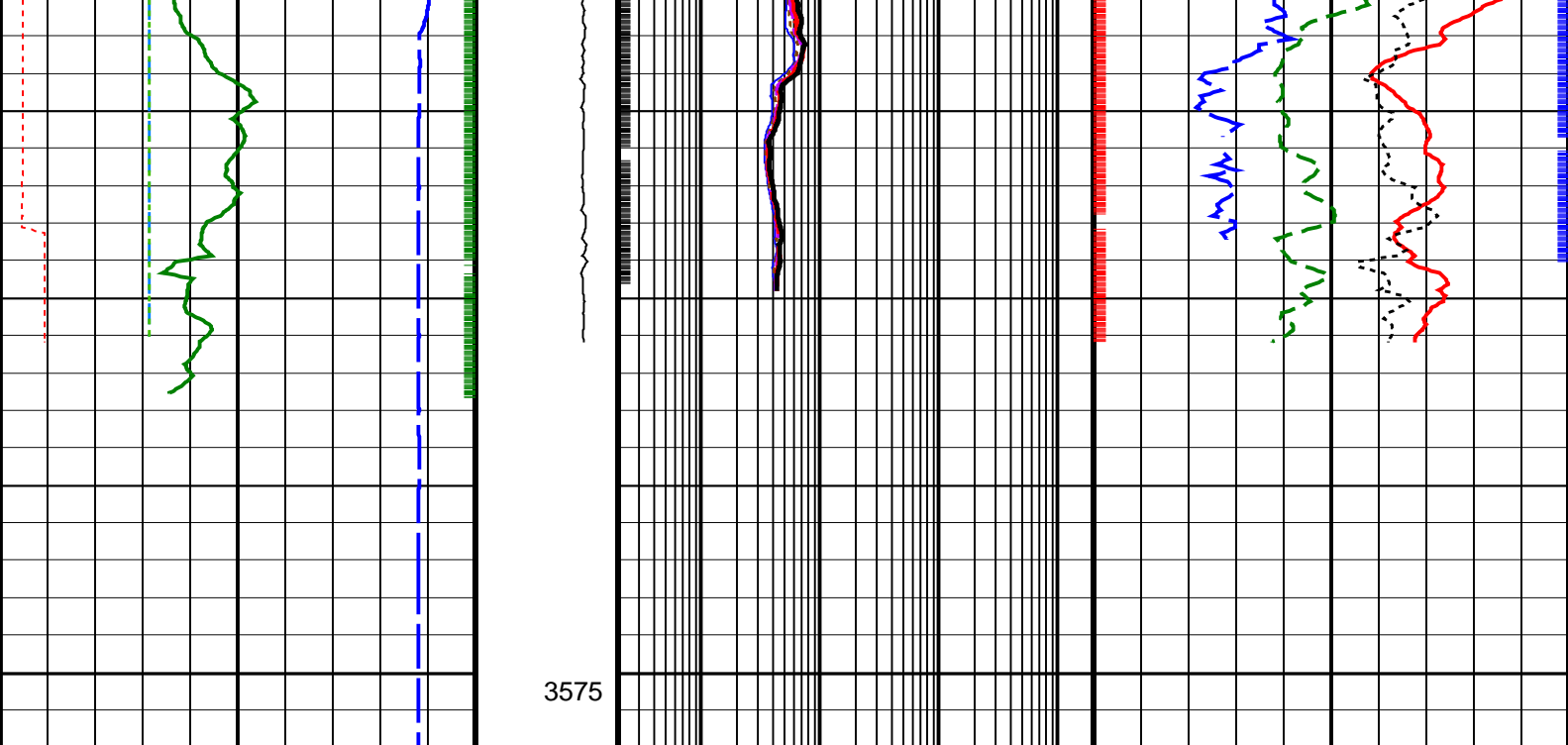












Gamma Ray, Average (GRMA) (GAPI)	Collar Rotational Speed (CRPM) (RPM)	ARC Phase Shift Resistivity 16 inch at 2 MHz (P16H)	Bulk Density, Bottom (ROBB)
		(OHMM)	(G/C3)
Time after BIT (between drilling and measurement) (TAB_DEN) (HR)	3575	ARC Phase Shift Resistivity 22 inch at 2 MHz (P22H) (OHMM)	Thermal Neutron Porosity (Ratio Method) in Selected Lithology (TNPH) (PU)
Ultrasonic Caliper, Horizontal Diameter (UCHO) (IN)		ARC Phase Shift Resistivity 28 inch at 2 MHz (P28H) (OHMM)	Bulk Density Correction, Bottom (DRHB) (G/C3)
Ultrasonic Caliper, Vertical Diameter (UCVE) (IN)		ARC Phase Shift Resistivity 34 inch at 2 MHz (P34H) (OHMM)	Photoelectric Factor, Bottom (PEB) (----
Rate of Penetration, Averaged over Last 5ft (ROP5_RM) (M/HR)		ARC Phase Shift Resistivity 40 inch at 2 MHz (P40H) (OHMM)	

PIP SUMMARY

Density Samples +

Neutron Samples +

Gamma Ray Samples +

Resistivity Samples +

IDEAL Version: ID13_OC_08

IDF